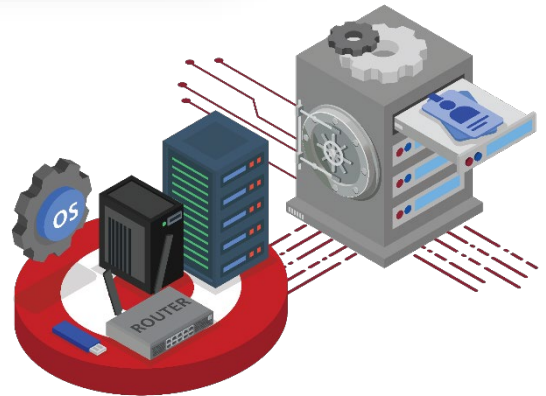




## Privileged Access & Account Management

AccessMatrix™ Universal Credential Manager (UCM) provides a virtual password safe deposit box protected by **post-quantum safe encryption** (via advanced **ML-KEM**) and optional **HSM** devices, securely storing privileged account IDs and passwords (aka credentials), safeguarding privileged access against emerging quantum threats. UCM delivers robust security features to address the key audit and operational challenges organizations face in managing credentials and session activities.

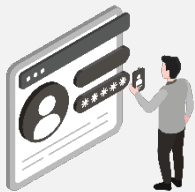


### Key Features



#### Post-Quantum Secure Login

Provides post-quantum secure login with ML-KEM encryption, safeguarding privileged access against emerging quantum threats.



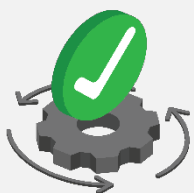
#### Interactive Session

On-demand password management Privileged User IDs, ensuring immediate retrieval of credentials during emergency or operational requirements for robust security and rapid response.

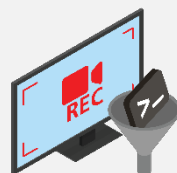


#### Programmatic Access

Prevent the security exposure of hard coding ID and password (functional ID) in application component for accessing databases and any other resources.



#### Extendable to Support New Target Systems



#### Session Recording & Command Filtering for Auditing



#### Secure & Scalable with High Availability Options



#### Ease of Deployment & Flexibility

# AccessMatrix™ Universal Credential Manager

## Privileged User Access (PUA) Module

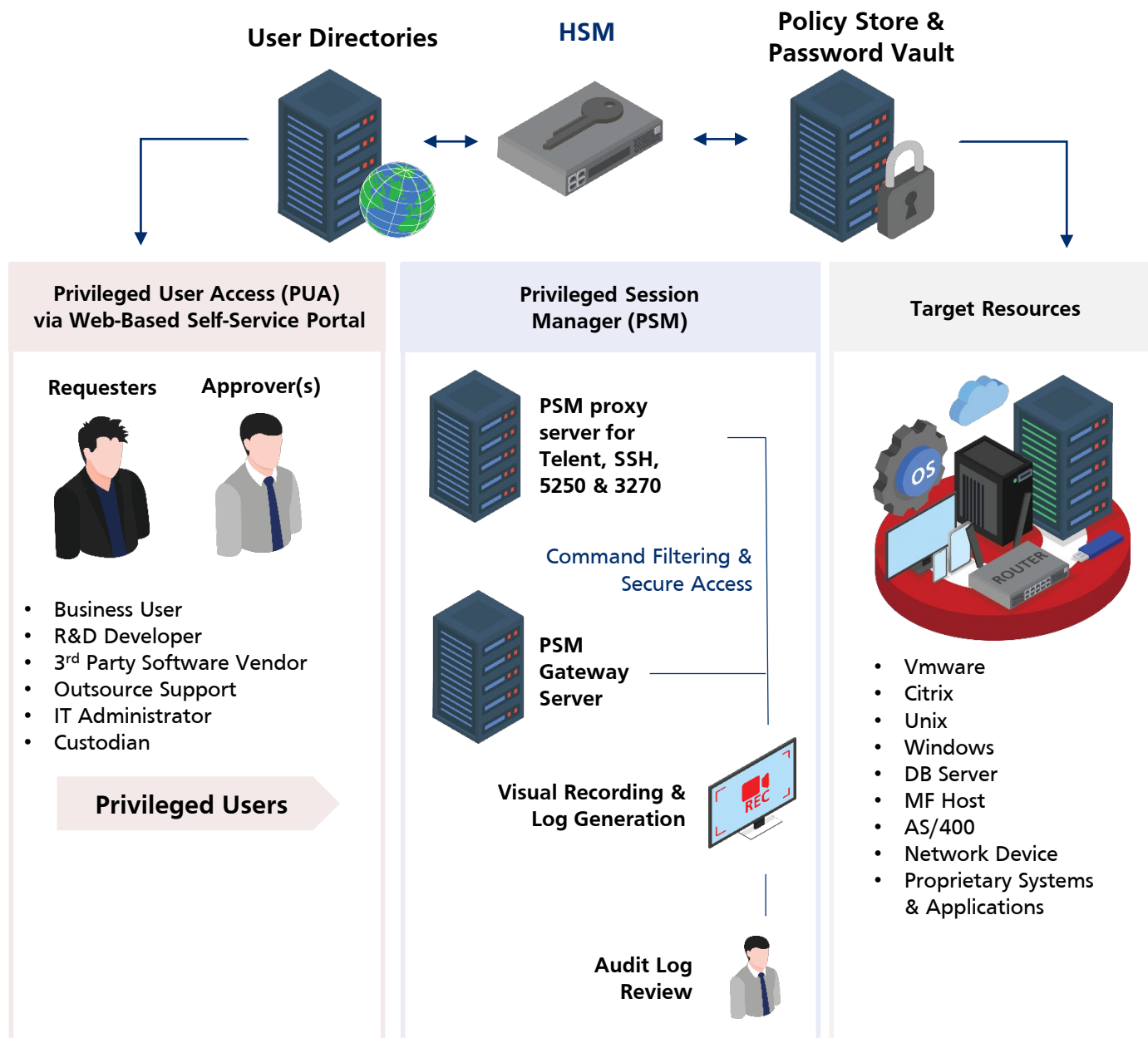
UCM provides a secure approach with multi-level approval flow and empowers organizations to manage security administrators to retrieve and deposit privileged credentials. This enables authorized users to check-in and check-out privileged credentials to perform their duties or during emergency situations.

## Privileged Session Manager (PSM) Module

Add-on Windows RDP Gateway Recorder to monitor and record privileged sessions. It supports video recording playback for forensic analysis. It also supports commands access control for selected protocols

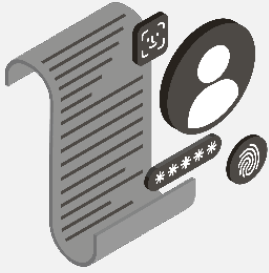
## Application Password Manager (APM) Module

Enables organizations to retrieve user IDs and passwords for specific applications during run time so that the user credential information does not need to be hard-coded in applications or command files.



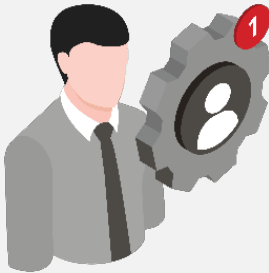
End-to-End Privileged Account Activity Management

## Core Functions



### Policy Driven Approach

Automatically enforces enterprise-wide security policies for passwords, authentication, and access restrictions, ensuring consistent policy application across the organization base on the defined security policy.



### Auto Account Discovery

Provide automatic account discovery report and notify administrators of new accounts not managed by UCM



### Workflow Approval

Provides a built-in workflow for secure credential retrieval, and tracking credential usage in performing password reset. Supports multiple workflow types, including multi-level approval, after-hours access, and manager-subordinate workflows, to suit various organizational needs.



### Dynamic Tag by Target Resource Type and Credentials

Support tagging of credentials for ease of management and retrieval of credentials and target resources.



### Password Consumers & Flexible APIs

Enables organizations to have quick deployment to address the password challenges with APIs and password consumers for dynamic replacement of IDs / password parameters



### Web-Based Self-Service Portal

Web portal that enables request submission, check in, check out and approval functionalities with role-based access control

## Comprehensive PAAM Features



Build-in workflows for office hours / non-office hours or integrate with external ticketing system



Workflow-driven credentials Check-in / Check-out with auto password update on check-in



Tagging credential (privileged passwords) e.g by project, UAT, production, OS



Bulk Import (CSV import) and Break Glass (backup PDF versioning)



Use encryption key, security policies from Safe with optional HSM protection



Support various authentication options



SSO to target resource with session video recording



Agent & Agentless integration with databases, Unix, Windows, routers, firewalls



Native Integration to existing Enterprise user store or target resource data store



Secure access and seamless connection from any location on any device (desktop, laptop, mobile)

## System Requirements

**UCM Server / UCM Gateway:**  
MS Windows 2019 and 2022,  
RedHat Enterprise Linux 9.x

**Java Runtime:**  
JRE 17 LTS

**Database for Policy Store:**  
MS SQL Server, Oracle  
RDBMS, and Oracle MySQL

**External User Store:**  
Active Directory, LDAP v3  
compliant directories and  
JDBC compatible databases

**Support Target Resources:**  
JDBC database servers, UNIX  
Servers, Window Servers,  
Active Directory, AS400, IBM  
RACF Mainframe, Cisco /  
Array, Cisco ACS, Scriptable  
SSH / Telnet-based network  
devices e.g TopSec, Juniper,  
Huawei, H3C and RuiJie,  
http, https, Z/OS, Weblogic,  
Websphere and Webportal

**Supported clients for UCM Gateway:**  
Database clients, VNC, rdp,  
web-based consoles, PuTTY,  
Tera Term, secureCRT and  
CuteFTP, WinSCP, SSH Secure  
File Transfer, IBM Data  
Studio, Pcomm, Exceed,  
vSphere Client

### Global Headquarters

Blk 750D Chai Chee Road #08-01  
ESR BizPark@Chai Chee (Lobby 1)  
Singapore 469004  
☎ +65 6244 3900  
✉ [enquiry@i-sprint.com](mailto:enquiry@i-sprint.com)

For a complete list of our offices in  
Hong Kong, Japan, Malaysia,  
Thailand & United States, please visit  
[www.i-sprint.com/contactus](http://www.i-sprint.com/contactus)

©Since 2000 i-Sprint Innovations Pte Ltd. All rights reserved.

i-Sprint, i-Sprint logo, AccessMatrix, AccessMatrix logo are registered trademarks of i-Sprint Innovations Pte Ltd. All other trademarks and registered trademarks are property of their respective owners. i-Sprint reserves the right to make changes to the specifications or other product information at any time and without prior notice.



[www.i-sprint.com](http://www.i-sprint.com)



iSprintInnov



iSprintInnov



[company/i-sprint-innovations](https://www.linkedin.com/company/i-sprint-innovations)



Scan for more  
information

**i-Sprint**  
Trust without Boundaries