

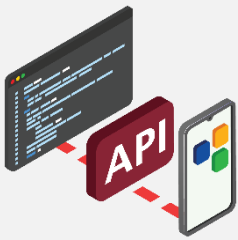


Mobile App & API Security Made Simple

Secure your app with mutual authentication and End-to-End Encryption for reliable data protection

AppConnect establishes a secure communication channel between the client device and application server by verifying both ends through a special authentication process. Built on top of Secure Socket Layer (SSL) and Transport Layer Security (TLS), it provides an extra layer of protection against man-in-the-middle attacks and data leakage. Furthermore, with end-to-end encryption (E2EE) for Application Programming Interface (API) information, **AppConnect** ensures sensitive data stays protected throughout.

Product Features



Easy-to-Use Security APIs

Integrate mutual authentication capabilities quickly into existing mobile apps



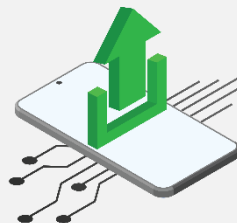
Mutual Client - Server Authentication

Establish a secure channel that prevents man-in-middle attacks



Additional Layer of Protection

On top of existing SSL / TLS communication channel



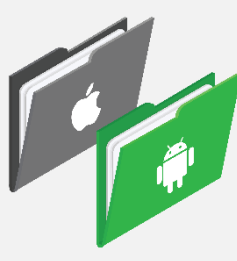
Easy-to-deploy Solution

For End-to-End Encryption on the client's access device



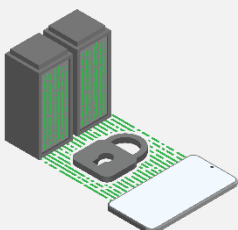
Optional Server Components

Providing additional security protection for user access such as Multi-factor Authentication (MFA), Secure SSO



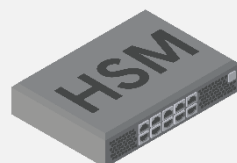
Encryption Libraries for Popular Mobile Platforms

Like iOS and Android



Secure Communication Channel between Client and Server Components

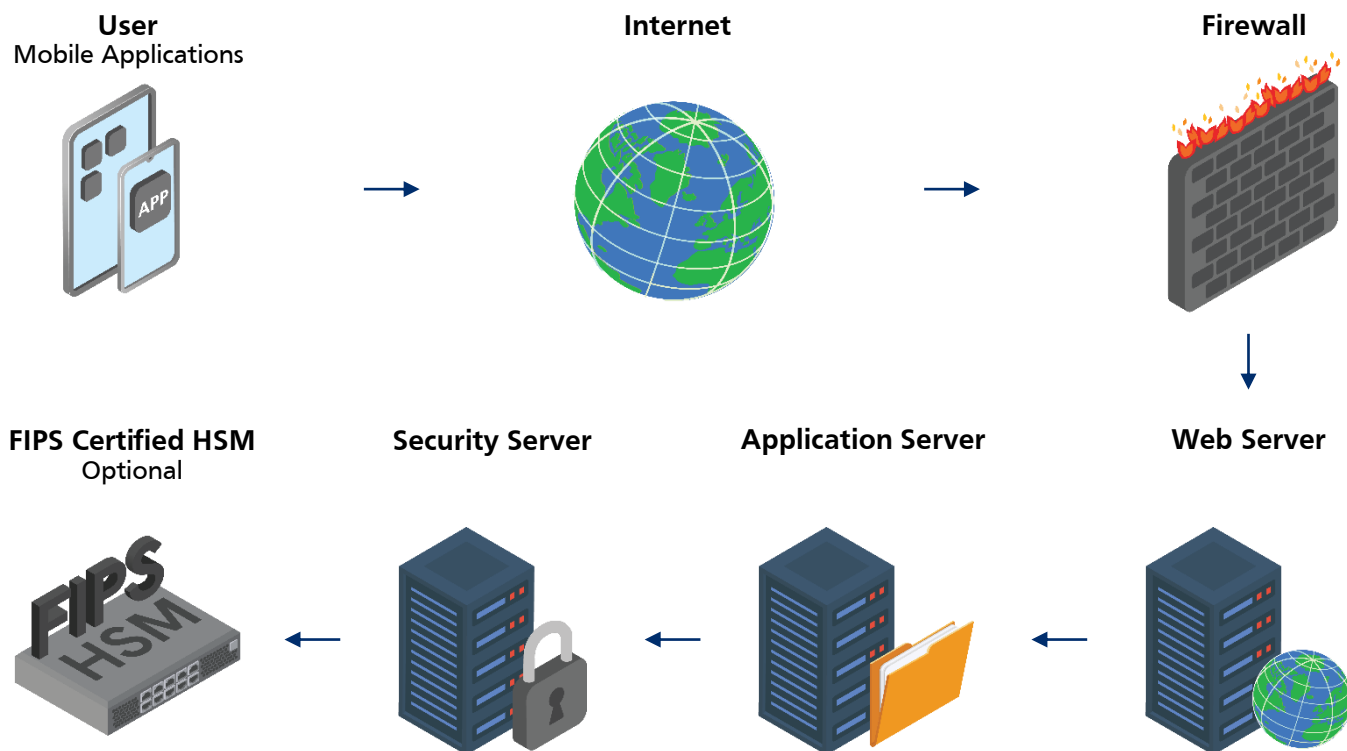
Data is protected with E2E Encryption on top of existing SSL or TLS channel



For Security-Sensitive Environments, Hardware Security Module (HSM)

Supported to provide additional security protection for transaction data and credential protection.

AppConnect Flowchart



Secure Communication Channel with Mutual Authentication and E2E Encryption

**Available on iOS, Android,
HarmonyOS NEXT**



Global Headquarters

Blk 750D Chai Chee Road #08-01
ESR BizPark@Chai Chee (Lobby 1)
Singapore 469004
☎ +65 6244 3900
✉ enquiry@i-sprint.com

For a complete list of our offices in
China, Hong Kong, Japan, Malaysia,
Thailand & United States, please visit
www.i-sprint.com/contactus

©2000-2026 i-Sprint Innovations Pte Ltd. All rights reserved.

i-Sprint, i-Sprint logo, AccessMatrix, AccessMatrix logo are registered trademarks of i-Sprint Innovations Pte Ltd. All other trademarks and registered trademarks are property of their respective owners. i-Sprint reserves the right to make changes to the specifications or other product information at any time and without prior notice.



Scan for more
information



www.i-sprint.com



[iSprintInnov](#)



[iSprintInnov](#)



[company/i-sprint-innovations](#)

i-Sprint
Trust without Boundaries